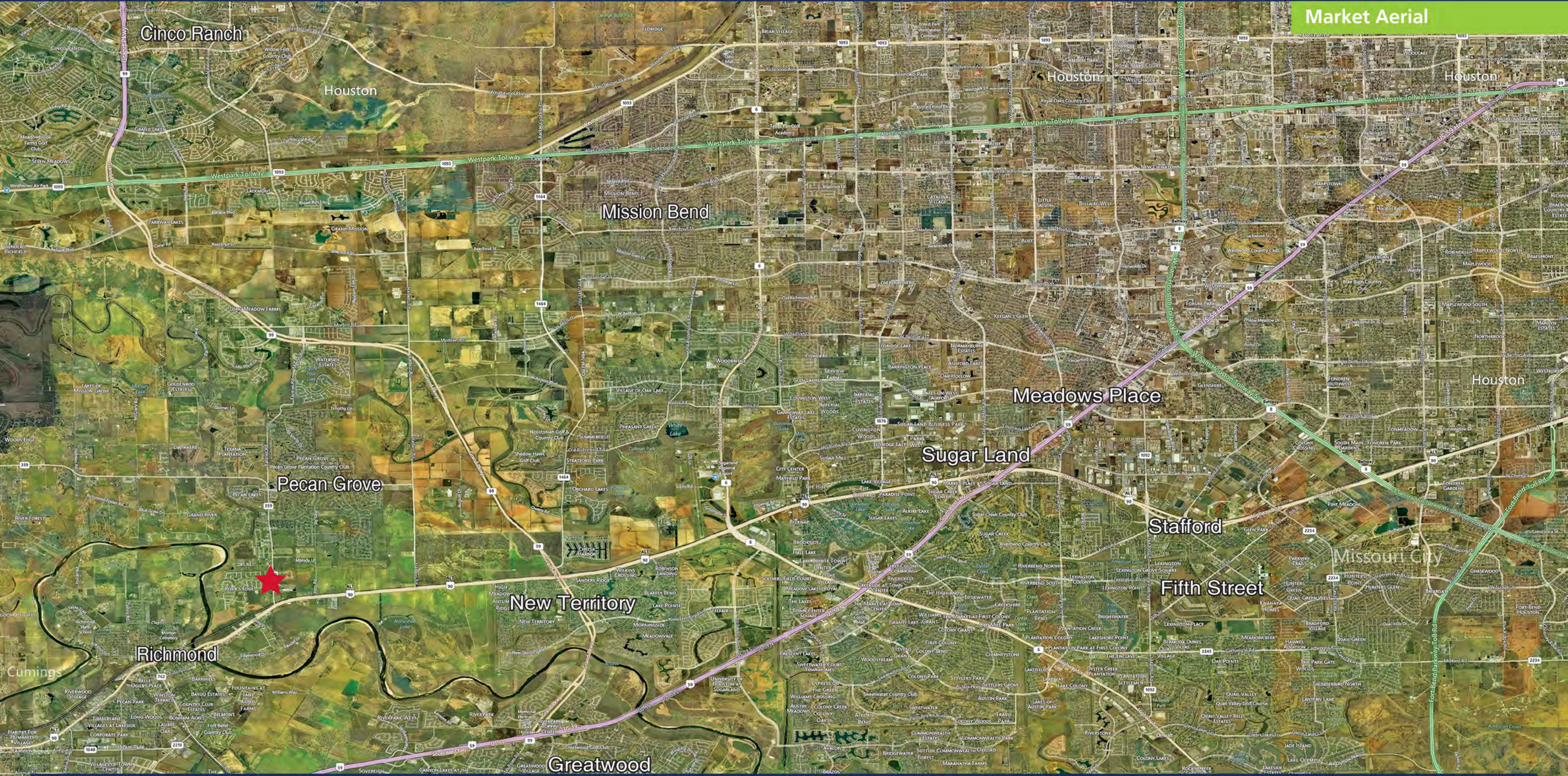


# Rivers Edge Court

503 FM 359  
Richmond, TX 77406



**WPW**  
REALTY ADVISORS

David Werlin - [dwerlin@wpwmgmt.com](mailto:dwerlin@wpwmgmt.com) - (713) 627-2711 Ext. 109  
Charles Blaschke - [charles@wpwmgmt.com](mailto:charles@wpwmgmt.com) - (713) 627-2711 Ext. 107  
[www.wpwrealtyadvisors.com](http://www.wpwrealtyadvisors.com) - 1330 Post Oak Blvd. Ste. 2525 - Houston, TX 77056

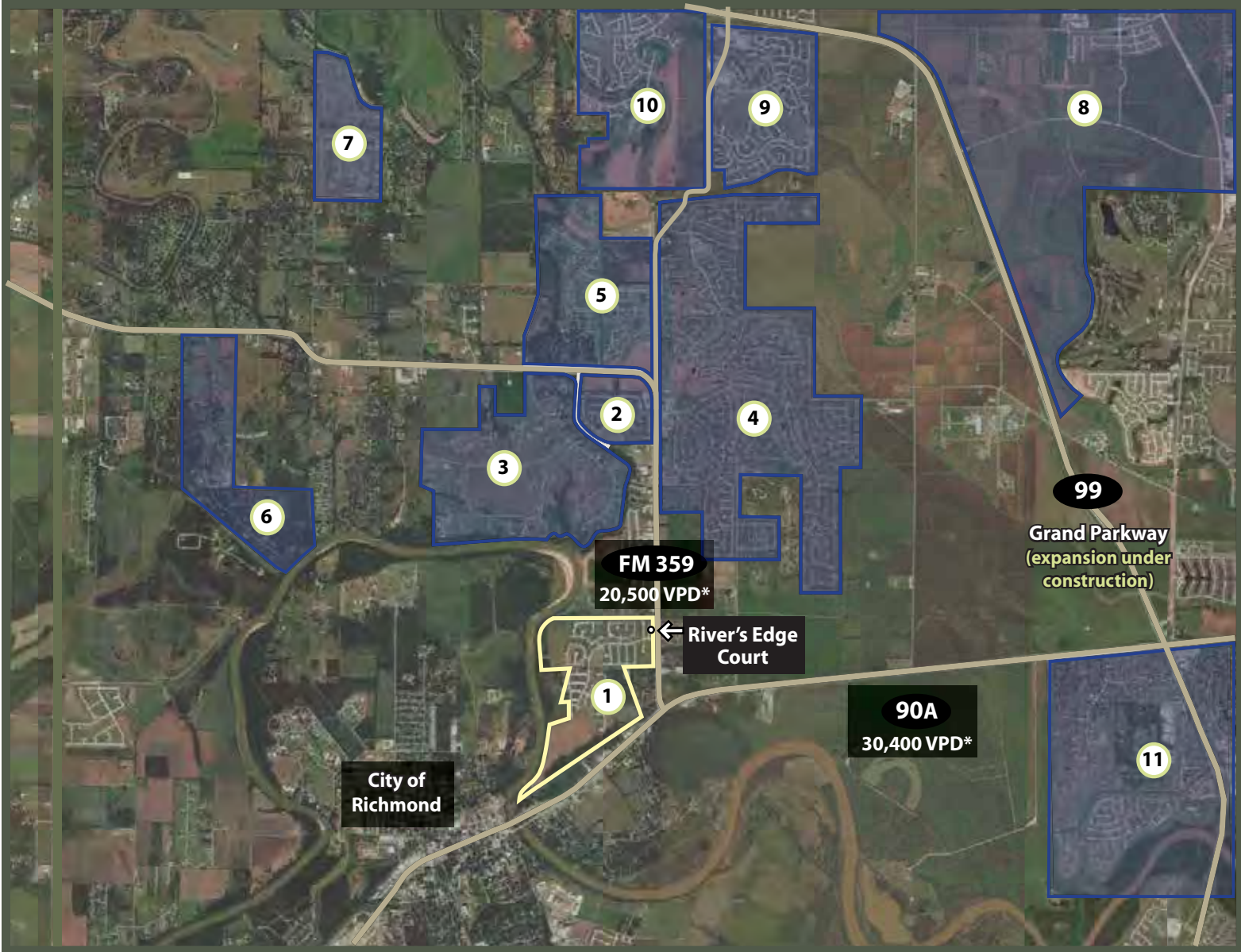
# Rivers Edge Court

503 FM 359  
Richmond, TX 77406

## Residential Aerial

### Population

- |   |  |  |   |   |   |
|---|--|--|---|---|---|
| <b>1</b> <b>River's Edge</b><br>Designed: 2,512<br>Current: 2,320       | <b>2</b> <b>Pecan Lakes</b><br>Designed: 1,029<br>Current: 1,029 | <b>3</b> <b>Grand River</b><br>Designed: 480<br>Current: 405           | <b>4</b> <b>Pecan Grove</b><br>Designed: 13,551<br>Current: 13,551      | <b>5</b> <b>Texana</b><br>Designed: 823<br>Current: 823               | <b>6</b> <b>River Forest</b><br>Designed: 392<br>Current: 141 |
| <b>7</b> <b>Lakes of Mission Grove</b><br>Designed: 609<br>Current: 215 | <b>8</b> <b>Aliana</b><br>Designed: 13,361<br>Current: 4,238     | <b>9</b> <b>Waterside Estates</b><br>Designed: 3,720<br>Current: 3,720 | <b>10</b> <b>Long Meadow Farms</b><br>Designed: 7,222<br>Current: 5,221 | <b>11</b> <b>New Territory</b><br>Designed: 14,175<br>Current: 14,175 |   |



**WPW**  
REALTY ADVISORS

David Werlin - dwerlin@wpwmgmt.com - (713) 627-2711 Ext. 109  
Charles Blaschke - charles@wpwmgmt.com - (713) 627-2711 Ext. 107  
www.wpwrealtadvisors.com - 1330 Post Oak Blvd. Ste. 2525 - Houston, TX 77056

Disclaimer: The information contained herein has been obtained from thought to be reliable sources; however, Owner & Broker make no guarantees, representations or warranties, expressed or implied, as to the accuracy of the information and should be verified by buyer/tenant. Property submitted is subject to errors, omissions, changes of price, prior sale/lease, or withdrawal without notice.